

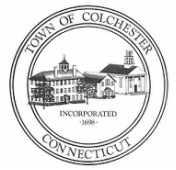


**Colchester Senior Center Building Committee**  
Conceptual Design

**PRESENTATION TO BOARD OF  
SELECTMEN & BOARD OF FINANCE**

January 21, 2021

# Agenda



## **Opening Statement**

Anthony Tarnowski, Building Committee Chair

## **Architectural Overview**

David Stein, Silver Petrucelli

## **Cost Estimate Review**

Mark Garilli, Construction Solutions Group

## **Public Education and Outreach**

Mark Garilli, Construction Solutions Group

## **Anticipated Schedule**

Kevin Hastings, Building Committee Member

## **Questions and Answers**

Anthony Tarnowski, Building Committee Chair

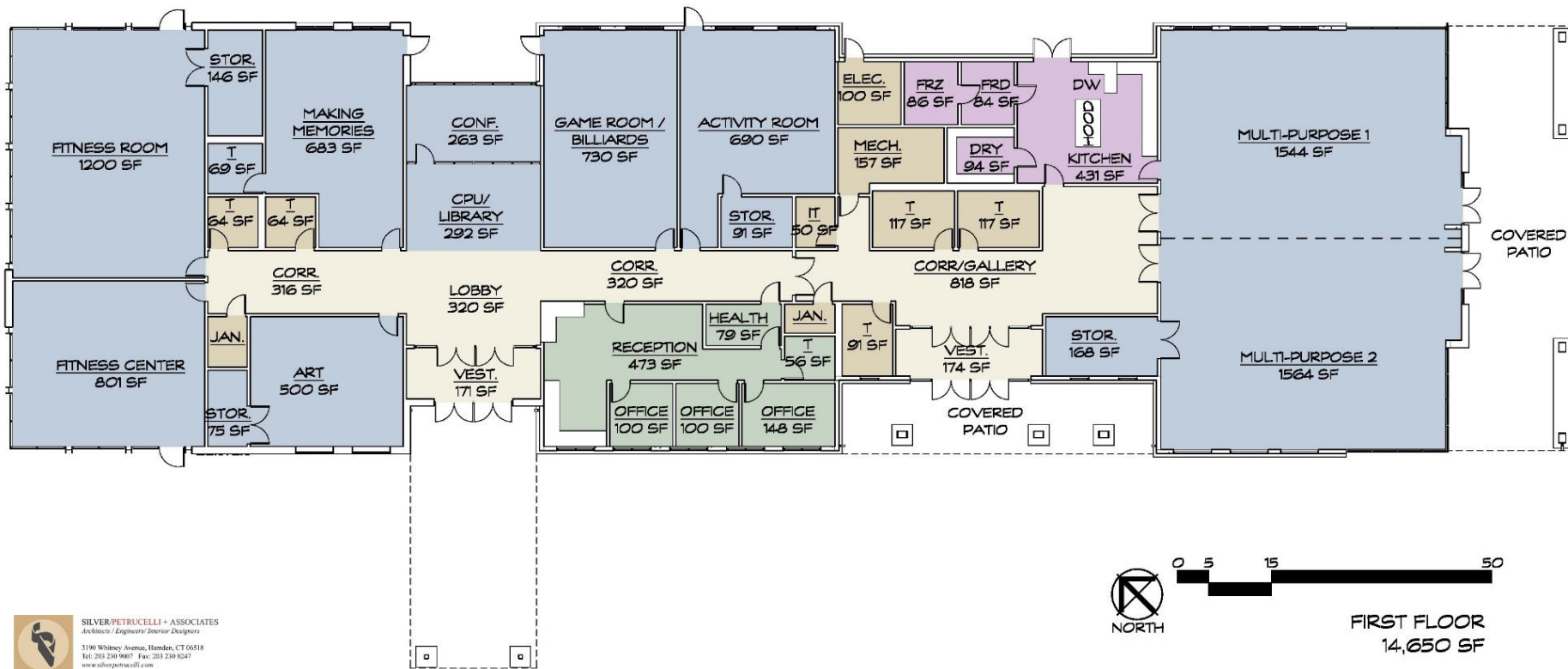
# Location Map



**SILVER/PETRUCELLI + ASSOCIATES**  
Architects / Engineers / Interior Designers  
3190 Whitney Avenue, Hamden, CT 06518  
Tel: 203 230 9607 Fax: 203 230 9241  
www.silverpetrucci.com



PROPOSED SITE PLAN



SILVER/PETRUCCI + ASSOCIATES  
Architects / Engineers / Interior Designers  
3190 Whitney Avenue, Hamden, CT 06518  
Tel: 203 230 9007 Fax: 203 230 8247  
www.silverpetrucci.com

PROPOSED FIRST FLOOR PLAN



SILVER/PETRUCCI + ASSOCIATES  
Architects / Engineers / Interior Designers  
3190 Whitney Avenue, Hamden, CT 06518  
Tel: 203 238-9907 Fax: 203 238-8247  
www.silverpetrucci.com

APPROACH FROM LEBANON AVE.



AERIAL VIEW (FRONT)



SILVER/PETRUCELLI + ASSOCIATES  
Architects / Engineers / Interior Designers  
3190 Whitney Avenue, Hamden, CT 06518  
Tel: 203 238-9007 Fax: 203 238-8247  
www.silverpetrucelli.com

AERIAL VIEW (REAR)





 **SILVER/PETRUCELLI + ASSOCIATES**  
*Architects / Engineers / Interior Designers*  
3190 Whitney Avenue, Hamden, CT 06518  
Tel: 203 230 9007 Fax: 203 230 8247  
[www.silverpetrucelli.com](http://www.silverpetrucelli.com)

MAIN ENTRY CANOPY



 **SILVER/PETRUCCI + ASSOCIATES**  
*Architects / Engineers / Interior Designers*  
3190 Whitney Avenue, Hamden, CT 06518  
Tel: 203 230-9007 Fax: 203 230-8247  
[www.silverpetrucci.com](http://www.silverpetrucci.com)

SECONDARY ENTRY / EVENT ENTRY



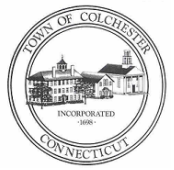
 **SILVER/PETRUCCI + ASSOCIATES**  
*Architects / Engineers / Interior Designers*  
3190 Whitney Avenue, Hamden, CT 06518  
Tel: 203 230 9000 Fax: 203 230 8247  
[www.silverpetrucci.com](http://www.silverpetrucci.com)

VIEW FROM REAR



 **SILVER/PETRUCCI + ASSOCIATES**  
Architects / Engineers / Interior Designers  
3190 Whitney Avenue, Hamden, CT 06518  
Tel: 203 230 9007 Fax: 203 230 8247  
www.silverpetrucci.com

REAR OUTDOOR SPACE / EVENT PATIO

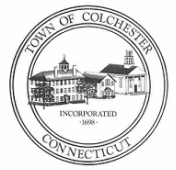


 SILVER/PETRUCCI + ASSOCIATES  
*Architects / Engineers / Interior Designers*  
3190 Whitney Avenue, Hamden, CT 06518  
Tel: 203 230 9007 Fax: 203 230 8247  
[www.silverpetrucci.com](http://www.silverpetrucci.com)

APPROACH FROM TOWN HALL

# Cost Estimate Review

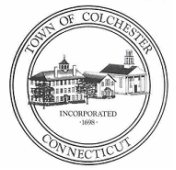
## Colchester Senior Center – New Construction



Item	Cost Estimate
Construction Costs (labor and material)	\$ 8,059,453.00
Soft Costs (design, oversight, legal, testing, insurances)	\$ 824,017.00
Owner Contingency (5% reserve fund)	\$ 443,423.00
<b>Total Project Cost</b>	<b>\$ 9,326,893.00</b>

# Public Education and Outreach

## Phase I – Project Approach



- **Defining Project Intent and Facts**
- **Community Engagement and Education**
- **Efforts Supported by Marketing Professionals**
  - Newsletter distributed to every household
  - Project-specific page on Town website
  - Social media
  - Town Hall and on-site displays / signage
  - Articles in *Rivereast News Bulletin*
  - Town / virtual meetings with common interest groups
  - Articles in Senior Center Newsletter
  - Presenting at Committee and Commission meetings
  - Presenting at BOE and PTO meetings
  - Outreach through the Commission on Aging
- **Proposed Referendum Timeframe / Logistics**
- **Post-Blackout Strategy**

# Anticipated Schedule

## Project Approach



CONSTRUCTION SOLUTIONS GROUP



2021												2022												2023											
J	F	M	A	M	J	J	A	S	O	N	D	J	F	M	A	M	J	J	A	S	O	N	D	J	F	M	A	M	J	J	A	S	O	N	D

Public Outreach

State & Local Reviews

★ June 8, 2021 –Referendum Approval

Finalize Building Design

★ Building Design Complete

Pre-Construction

Building Construction (12 Months)

★ Construction Complete





# Questions & Answers