

Town of Colchester, Connecticut

127 Norwich Avenue, Colchester, Connecticut 06415

**Agenda
Joint Board Meeting
(Board of Selectmen and Board of Finance)
Wednesday, February 20, 2019 @ 6:30pm
Colchester Town Hall
Meeting Room 1 and 2**

1. Call to Order
2. Procedure for this Joint Board Meeting
3. Presentation of the Paramedic Program by Chief Cox
4. Question and Answer Session for Citizens Regarding the Paramedic Program Presentation
5. Non-Binding Straw Poll Regarding the Paramedic Program
6. Adjournment

RECEIVED
COLCHESTER, CT
2019 FEB 15 AM 10:03
John J. [Signature]

CFD Paramedic Program presentation to BOS/BOF

WHY COLCHESTER NEEDS ADVANCED LIFE SUPPORT (ALS)


20 February 2019



1

SYNOPSIS

What we have now – Basic Life Support
Where we want to be – ALS
What it will cost – Options
How we can get there – The Plan



2

What We Currently Provide

Town of Colchester is 49 square miles

Basic Life Support Services (BLS)

- Emergency Medical Responder
- Emergency Medical Technician

Utilize paramedic Advanced Life Support (ALS) services, through DPH State approved agreements with regional public service agencies.

when available.

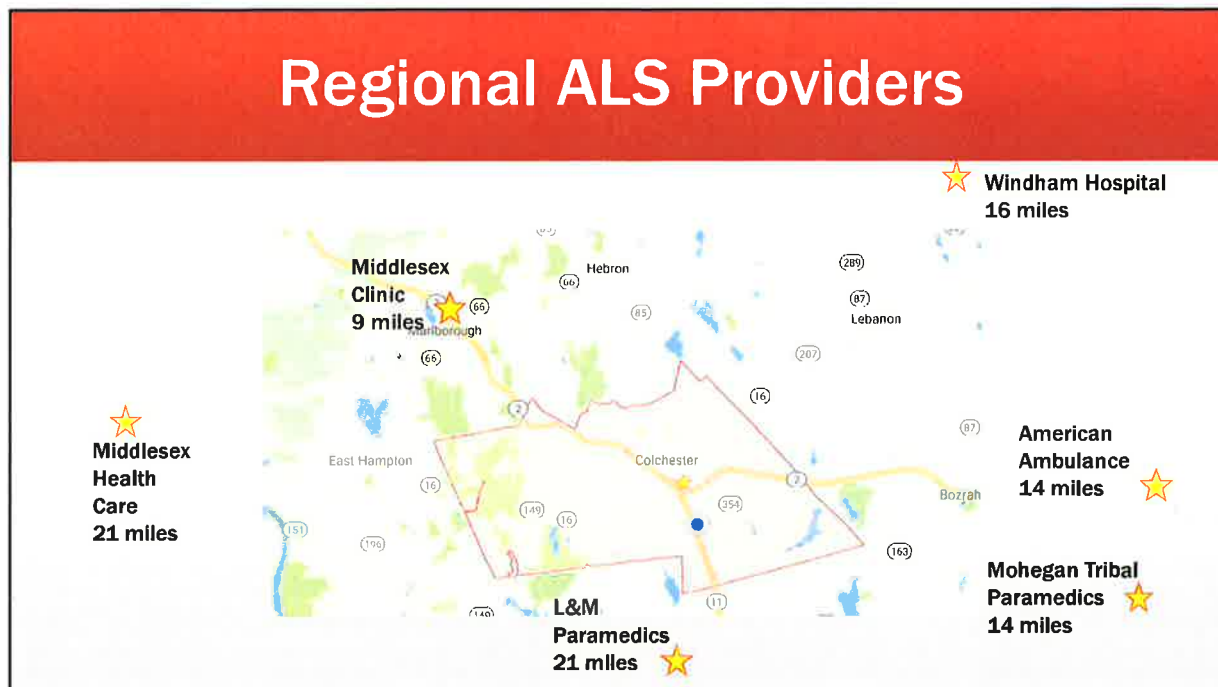
3

Current Most Utilized ALS Provider

MIDDLESEX PARAMEDIC #3 OUT OF MARLBOROUGH CLINIC
IS 9 MILES AWAY, COVERING MULTIPLE TOWNS, TOTALING 165
SQUARE MILES, SERVING APPROXIMATELY 44,400 PEOPLE.

4

Regional ALS Providers



5

Why is a paramedic needed in Colchester?

Colchester is a Heart Safe Community.

American Heart Association chain of life includes early 911, CPR, early defibrillation (community or BLS), BLS and ALS.

For every minute that a cardiac arrest victim is not revived, the chances to successfully revive the person decrease 10%. (AHA/ACLS).

Based on documented response times, with a Colchester based ALS response, the patient's revival chances could increase significantly.

6

Another Example

Something as simple as a diabetic emergency may need a paramedic.

If your blood sugar is low and 911 is called an EMT can give oral glucose.

But if your blood sugar is too low and the patient is unable to swallow oral glucose, the only option is intravenous dextrose and/or a hormone injection.

Only a paramedic can administer these medications pre-hospital.

7

When Paramedics Are Needed



- Abdominal pain
- Allergic reaction
- Altered mental status
- Anaphylaxis
- Breathing problems
- Burns
- CO poisoning
- Cardiac arrest
- Chest pain
- Diabetic problems
- Drowning
- Electrocutation
- Failure of Medical Devices
- Heart problems
- Heat/Cold Exposures
- Hemorrhage/Lacerations
- Industrial accidents
- Ingestion/poisoning
- Overdoses
- Stroke
- Serious Motor Vehicle accidents
- Traumatic injuries
- Fainting/unconscious
- Unknown problems
- Untimely death

***Required medical control responses**

8

In 2017, 311 patients transported by Colchester Fire Department, required paramedic ALS interventions.

ALS PATIENT NUMBERS WOULD BE HIGHER AS THERE WERE 166 TIMES THERE WERE NO PARAMEDICS^ THAT REACHED THE PATIENT'S SIDE.

BASED ON CURRENT STATEWIDE DEMOGRAPHIC TRENDS*, DEMAND FOR ALS SERVICE IS RISING. (*COLCHESTER PLAN OF CONSERVATION)

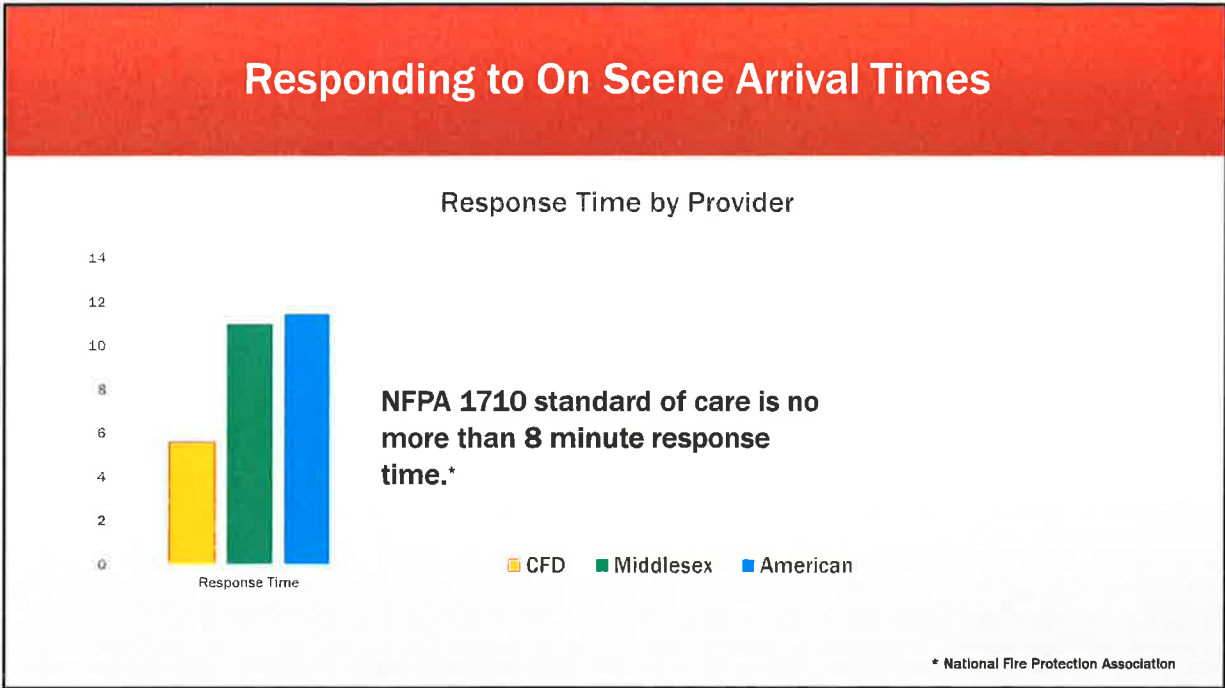
9

Responding to On Scene Arrival Times

Unit	Location	Average Response Time
CFD*	Colchester*	5:59*
Middlesex	Marlborough	11:00
American	Norwich	11:45

If the C.F.D. provides ALS - Our Paramedic on-scene time will be equal to 5:59 minutes
Response time based on NFIRS data.

10



11

- ## Why is Time so Important ?
- Cardiac Arrest (previous example)
 - STEMI
 - Stroke
 - Pediatric Emergencies
 - Elderly Health Issues
 - Motor Vehicle Accident
 - “Golden Hour”
 - 2 Long Term Care Facilities
 - CHA – Dublin/Ponemah
 - Colchester Commons
 - Amston Village
 - Ga Na Den I, II, III
 - Northwoods
 - Multiple Special Needs Homes
 - Entire Educational System
 - Demographics

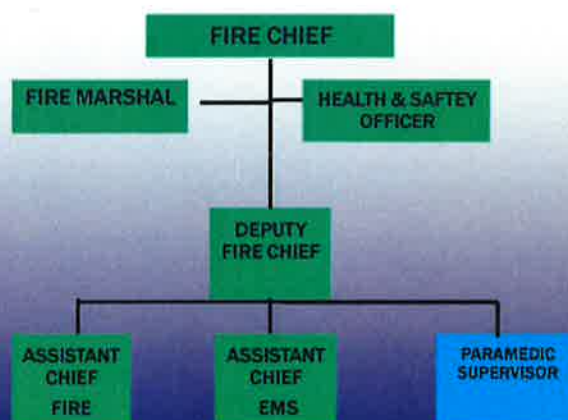
12

Providing ALS is a Win

1. Earlier interventions = more lives saved.
2. Increased ALS responses.
3. Advanced patient care (Bringing the ER to the patient).
4. Can reduce patient hospitalization time.

13

COLCHESTER FIRE DEPARTMENT CHAIN OF COMMAND



14

Assistant Chief – EMS

- Annual EMS Total Call Volume (Transport and Non Transport): 1417 (2018).
- CHFD EMS Certified Personnel: 49
- Types of EMS Response: Currently State certified as Colchester's 1st Responder /Ambulance Transport.
- BLS before ALS (Strong BLS results in positive ALS equaling positive patient outcomes).
- Overall Training Program Oversight.
- Quality Assurance/Quality Control on BLS Response and Documentation.
- ePCR – Electronic Patient Care Reporting.
- EMS personnel scheduling.

15

Paramedic Supervisor / Program Oversight

Paramedic/Firefighter Supervisor: Is a multi skilled certified position, providing paramedic and firefighter services.

- **QA/QC Reviews**
- **Medical Oversight**
- **Narcotics Management (in accordance with legal requirements)**
- **Training Coordination BLS and ALS**

16

Program, Expenses, & Revenue

C.F.D. ENDORSES THE FULL IMPLEMENTATION OF THE PARAMEDIC PROGRAM.

TO INCLUDE A MINIMUM EIGHTEEN (18) MONTH ALS EVALUATION PERIOD, COMPILING REVENUE DATA THAT HAS BEEN REQUESTED BUT IS NOT CURRENTLY AVAILABLE.

17

Staffing Proposal

1. INITIAL PARAMEDIC PLAN: HIRE TWO (2) FULL-TIME PARAMEDIC/FIREFIGHTERS
2. FULL IMPLEMENTATION PARAMEDIC PLAN: HIRE ONE (1) ADDITIONAL PARAMEDIC/FIREFIGHTER
3. HIRE PER-DIEM PARAMEDIC/FIREFIGHTERS TO FILL IN AND CREATE HIRING LIST FOR TRANSITIONAL AND FUTURE HIRING'S

18

Paramedic Program Start Up Cost

Initial One Time \$100,000 Expense Includes:

- **General ALS Supplies**
 - 2 Gear Bags, Tools, Monitor(s) x2
- **Initial Medications Inventory**
- **Narcotics and Chain of Custody Implementation**

Going forward replenishing supplies is included in ongoing expense estimates.

FULL IMPLEMENTATION PLAN - PARAMEDIC RESPONSE VEHICLE:

\$45,000 new Capital outlay: 5 year life span.
explore options used or leased \$9,000/yr.


*Colchester Fire Department will investigate and pursue all possible funding grants, such as *SAFER and AFG.*

19

FY Impact to FD Operational Budget

- **1st year Initial Plan** \$350,000
 - 2 hirees: 1 Paramedic Supervisor/
Firefighter + 1 Paramedic/Firefighter +
(1P/FF in-house)
 - *Supervisor covers weekly shifts
- 2nd year Full Plan** \$450,000
- 3 total hirees: 1 Paramedic Supervisor/FF +
2 Paramedic/Firefighters + (1 P/FF in-
house)**

Currently 4 members of the CFD are CT licensed paramedics. They will have option to become part of paramedic staff.



20

Current CFD Staffing

**Firefighters/Emergency Medical Technicians/Fire Police
= 71 members and 7 Firefighter/EMTs employees**

Hiring Plan

Initial Plan:

***2 Paramedic/Firefighters**

**Full Plan: add one additional
total: *3 Paramedic/Firefighters**

**State of CT ALS ambulance staffing requires 1 EMT and 1 Paramedic
*Paramedic Supervisor inclusive**

21

Tasked Services of C.F.D.

Emergency Medical Service Care: 1st Responder/BLS transport, Evaluation, Assist Invalid

**Fire Suppression: Buildings, Vehicles, Brush, Chimney, Cooking Fires, Odor of Electrical Burning
Rescue- MVA, Search, Lock-out, Water & Ice**

**Hazardous Materials Response: protecting and evacuating people, stabilizing environment and
material, propane gas leaks**

**Service Calls: flooded basements, power line/trees down, road closures, etc. (Don't know who to
call- Call FD)**

**Public Service: Car Seat Installation, Smoke/CO detectors, Fire Prevention, Educational Emergency
Drills etc.**

Stand-byes : BAHS Varsity Football, Community Events*

22

Budget Year	Projected FY Budget Revenue	Actual FY Revenue	Amount Above Projected Revenue
2017/18	\$500,000	\$582,728.43 *	\$82,728.43
2016/17	\$490,000	\$552,328.14 *	\$62,328.14
2015/16	\$475,000	\$537,524.81 *	\$62,524.81
2014/15	\$475,000	\$532,669.30 *	\$57,669.30
2013/14	\$475,000	\$503,355.00 *	\$28,355.00
		Total exceeded	\$293,605.68
	10 year actual revenue generation	5,144,533.98	
	10 year actual Revenue average	514,453.40	
2012/13 Actual - \$490,727.87* 2011/12 Actual - \$493,173.95* 2010/11 Actual - \$472,637.22* 2009/10 Actual - \$511,276.16* 2008/09 Actual - \$465,113.10*			
* Colchester Connecticut Adopted Budgets - Revenue Summary/Charges for Service/Ambulance Fees			

23

Budget Year	Adopted C.F.D. Budget/population	Cost per person (pp) without generated revenue	Cost per person (pp) with C.F.D. generated revenue via Ambulance Fees
2017/18	\$1,297,266/#16,130	\$80.43 pp	*\$714,537.57 rev 44.30 pp
2016/17	\$1,235,606/#16,192	\$76.55 pp	*\$683,277.86 rev 42.20 pp
2015/16	\$1,285,045/#16,210	\$79.61 pp	*\$747,520.19 rev 46.11 pp
2014/15	\$1,235,086/#16,034	\$76.51 pp	*\$702,416.70 rev 43.81 pp
2013/14	\$1,222,600/#16,034	\$75.74 pp	*\$719,245 rev 44.86 pp
	# Population as noted by Chatham Health District, recognized in town budget.		* Adopted budget subtracting revenue generated from C.F.D.

24

Budget Year	Adopted C.F.D. Budget	C.F.D. generated revenue	C.F.D. % return to Town of Colchester
2017/18	\$1,297,266	\$582,728.43	44.92 %
2016/17	\$1,235,606	\$552,328.14	44.70%
2015/16	\$1,285,045	\$537,524.81	41.83%
2014/15	\$1,235,086	\$532,669.30	43.13%
2013/14	\$1,222,600	\$503,355.00	41.17%

25

Had Colchester Fire Department been providing ALS services...

Year	Ambulance Calls/ Transports/ ALS Transports*	BLS/ALS Fee Difference^	Revenue Potential (Billable)
2017	1417/1167/311	\$425.00	\$132,175.00
	2017* 166 no ALS to patient's side	166 X .75 =125	\$53,125.00 = \$185,300
2016	1261/1094/312	\$379.00	\$118,248.00
2015	1503/1201/344	\$369.00	\$126,936.00

*These numbers would have increased based on ALS availability.
 ^Averaged 2 State of Connecticut DPH ALS transport proposed Maximum Allowable Fees. These projections do not include mutual aid intercepts or helicopter ALS assist.

26

Had Colchester Fire Department been providing ALS services...

Year	Transports/ ALS Transports*	BLS/ALS Fee Difference^	Revenue Potential (Billable)
2017	1167/311 2017* 166 no ALS	\$425.00 166 X .75 =125	\$132,175.00 \$53,125.00 = \$185,300
2016	1094/312	\$379.00	\$118,248.00
2015	1201/344	\$369.00	\$126,936.00
Budget Year	Adopted C.F.D. Budget	C.F.D. generated revenue plus 58% of revenue potential	C.F.D. % return to Town of Colchester
2017/18	\$1,297,266	\$582,728.43 + \$107,474 = \$690,202.43	44.92 % 53.32 %
2016/17	\$1,235,606	\$552,328.14 + \$68,584 = \$620,912.14	44.70% 50.25%
2015/16	\$1,285,045	\$537,524.81 + \$73,622.88 = \$611,147.69	41.83% 47.56%

27

Advantages of Colchester Providing Paramedic Services

For Patients (Colchester residents):

- Presently a patient can receive an ambulance bill and paramedic (ALS) bill.
 - ❖ A CFD bill is \$743, the ALS intercept bill is \$835 = \$ 1578.00
- Currently there are insurance companies that hesitate paying the intercept fee.
- Patients will receive one bill for transportation and ALS services.

28

Advantages of Colchester Providing Paramedic Services (cont.)

For Patients (*Colchester residents*):

- Patients could experience a decrease in out of pocket expenses (one claim vs two)
- A decrease in the total cost of the service example
 - ❖ Two bill total is \$1578.00 One bill average ALS total is \$ 1046.00
 - ❖ A potential decrease of \$532.00 in fiscal responsibility
- Personalized interactions are more comforting between residents and C.F.D. staff

"Colchester community members helping community members in need".

29

The Town of Colchester CT

Colchester FD Strategic Plan

Presented September 20, 2016

Recommendation #1 Investigate BLS to ALS pg. #22

State of CT DPH

Local Emergency Medical Services Plan

**January 2015 Goal: Support the Mission of EMS/
*Expansion to ALS Paramedic Level***

30

- Procure Medical Control ... Arranged
- On site narcotics license... Obtained
- Mutual aid agreements... In Process
- Town Approval...February 2019
- Paramedic Program Information Campaign
- Town Funding... June referendum 2019
- State of CT Authorization... August 2019
- 24 x 7 x 365 Coverage ... Jan. 2020
- Full Implementation... June 2020 - FY21

Implementation Time Frames

ALS PARAMEDIC PROGRAM

31

Colchester Fire Department Paramedic Program Public Education Campaign

The public education program for the proposed CHFD Paramedic Program will be an extensive mix of on-line social media informational posts and in-person informational sessions to be held at various locations throughout the town.

Online Social Media - The online portion of the informational campaign will consist of posts on the various Colchester social media sites.

All posts will be appropriately vetted and any answers to questions will be from the Fire Department's administration.

Colchester Fire Department (Facebook, Twitter & Dept. Website)

Colchester First Selectman (Facebook)

Private Facebook Sites (potential to reach over 8,000 residents).

- All Things Colchester
- Connecting Colchester
- Keeping it All In Colchester

In Person Informational Sessions - A series of five (5) general public informational sessions will be held monthly from Jan 2019 to May 2019.

These will be presented by the Chief of the Department and other relevant personnel. Locations for the sessions will be as follows:

- Colchester Public Library
- Colchester Senior Center
- Northwoods Community Hall
- Colchester Commons Community Hall
- Westchester Congregational Church
- Colchester Educational System
- Colchester Housing Authority
- Community groups such as the Lions, Rotary, Businessmen's Association etc.

In addition, during this timeframe there will be informational articles submitted to the various print newspapers serving the Colchester area.

32

Summary Slide

- Data supports earlier intervention of Advanced Life Support (ALS) based on response times in Colchester.
- A decrease in the number of patients not having ALS response to their side.
- Earlier ALS to patient produces high probability of successful positive patient outcomes.
- A decrease of patient billing issues is projected, decreasing the total cost and out of pocket expenses.
- With cities and towns in Connecticut being limited on methods of revenue generation, The Town of Colchester will increase the revenue generation with the addition of this new service, and reduce the per person operational cost of the Colchester Fire Department for taxpayers.

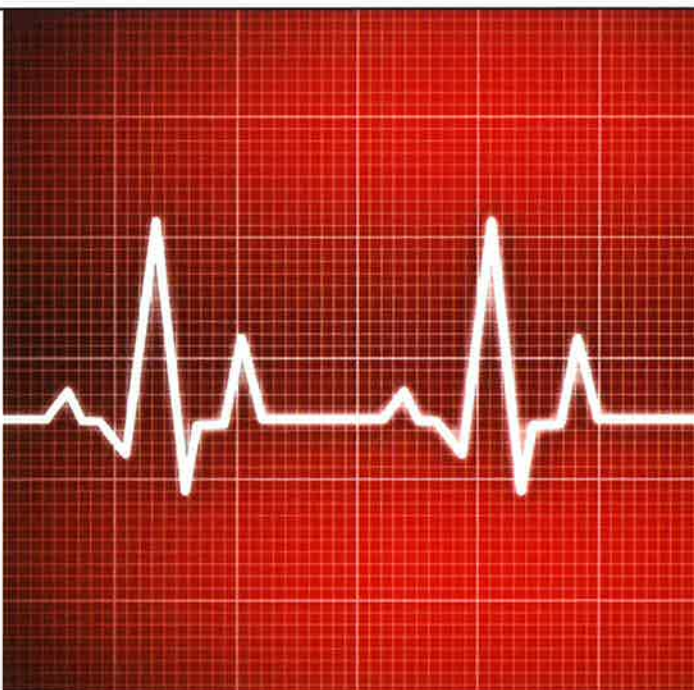
33

CFD Paramedic Program presentation to BOS/BOF

WHY COLCHESTER NEEDS
ADVANCED LIFE SUPPORT (ALS)

THANK YOU !!!

20 February 2019



34