

**Town of Colchester**  
ARPA Recovery Funding Request Application

**Directions:** Please fill in all fields. Once completed, either print and drop off this application to the First Selectman's office located at 127 Norwich Ave, Colchester, CT 06415, or save a copy and email to ARPA@ColchesterCT.gov. If you have questions please email ARPA@ColchesterCT.gov. Please include any additional documentation you feel would help in the application process. Submit only one project per application (submit multiple applications if you have multiple projects).

**Important:** Applicant must demonstrate that the funding use directly addresses a negative economic impact of the COVID-19 public health emergency.

**Applicant Background Information**

<b>Applicant Name:</b>	Tiffany Quinn	<b>Date Prepared:</b>	October 6, 2021
<b>Applicant email:</b>	tquinn@colchesterct.gov	<b>Applicant Phone:</b>	(860) 537-7295
<b>Department / Business / Establishment Name:</b>	Colchester Parks & Recreation		

**Project Details**

<b>Project Title:</b>	RecPlex Playground	<b>Anticipated Start Date:</b>	May 2022
<b>Total Funding Request Amount:</b>	\$ 498,900	<b>Anticipated Length of Time to Complete Project:</b>	3 weeks
<b>On a scale of 1 (Not Urgent) - 10 (Very Urgent), how urgent is this request? Please explain.</b>	10-Public request and need for outdoor recreational opportunities.		

**Project Description (How will the funds be used?)**

Funding will include the following:

- New playground equipment for all ages and abilities- toddlers, ages 2-5 years, and 5-12 years
- Playground structures that have wheelchair and handicapped access
- Playground equipment will include slides suitable for ages 2-5 and 5-12, which has been the most requested piece of playground equipment
- Professional installation of new equipment at RecPlex

**Justification (Please describe how your request addresses a negative impact to COVID-19.)**

COVID-19 brought with it many negative impacts. Nationally, parks and recreation agencies are in the best position to address these resulting needs. The playground has been removed over the past 8 months as parts were deemed unsafe, irreplaceable or a liability. Over the past 4 years, the playground has been in disrepair and funding was not available to replace the playground equipment. At this time, with the help of the ARPA funding, we have the opportunity to create a safe, accessible playground that will be the pride of the community. Over the past few months, many parents and interested community members have met to discuss what was most needed by the children in Colchester.

**Briefly explain the positive impact your project will have on the community.**

Playgrounds serve as a key role in community vitality. NRPA "Key Findings" report that 4 in 5 adults seek high quality parks and recreation when choosing a place to live; the greatest challenge keeping Parks and Recreation from being inclusive to all members of a community is insufficient funding (58%); Nearly all (96%) U.S. Adults spend time outdoors daily; Nearly all (92%) U.S. adults say it is important for their local government to invest in community infrastructure, including parks...;93% of U.S. Adults say they fondly remember childhood summer activities provided by parks and recreation. The top activities include: Going to beach/lake, Going to park, Playing at the playground.

The Colchester 2021 Equity Profile provided by DataHaven in August 2021 reports that:

1. Colchester has a higher percentage of smoking and obesity than New London county and the State of CT.
2. Colchester has a Lower percentage who exercise 3+ days per week compared to New London county and the State of CT.

However, this reports shows that Colchester excels in all measures of "community cohesion" compared to New London county and the State of CT. Ratings included are: Trust neighbors, Good place to raise kids, Safe to walk at night, Satisfied with area, Youth have positive role models.

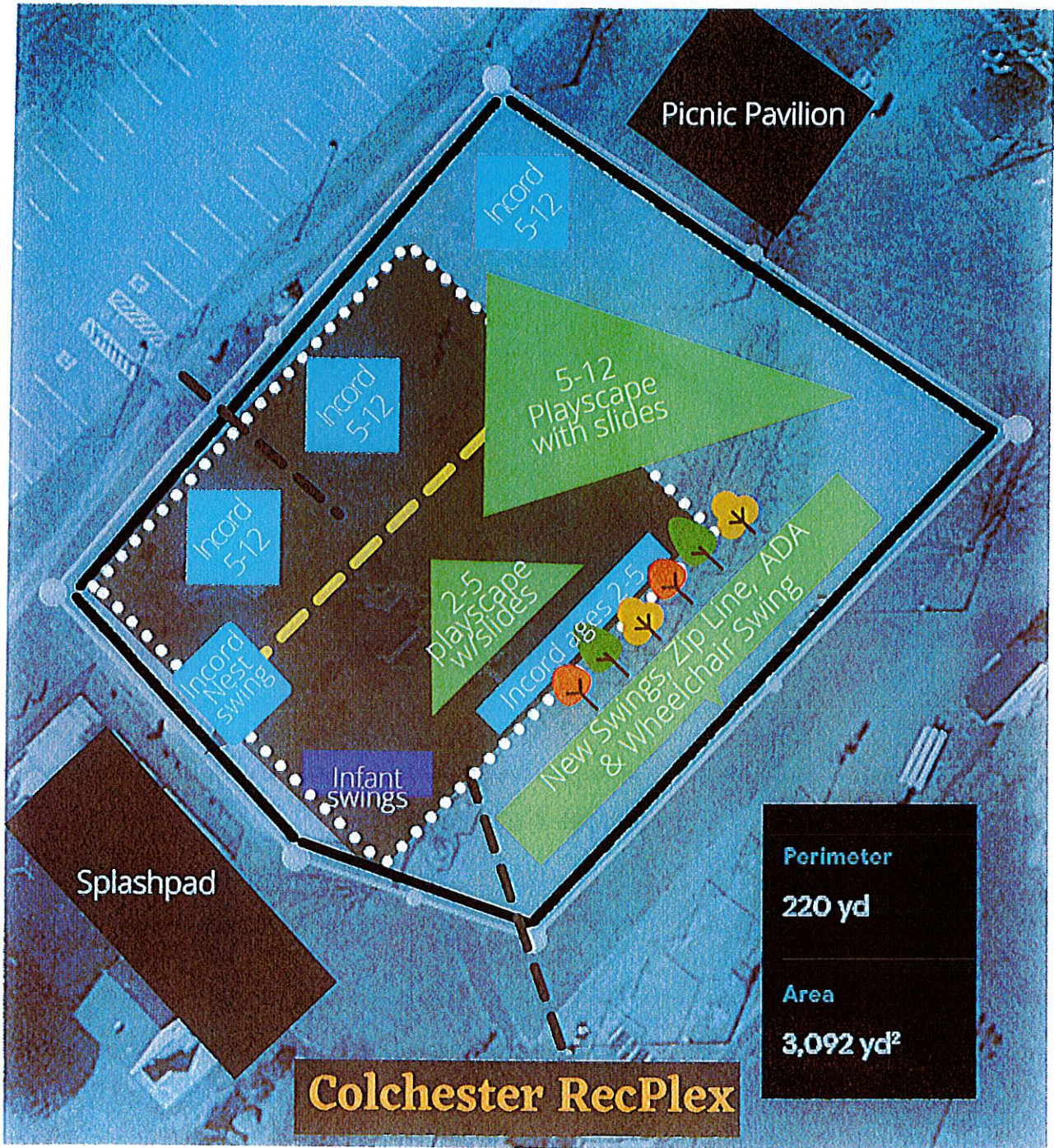
For all of these reasons, and more, playgrounds and community parks are essential to building a healthy community. The RecPlex playground is the centerpiece of our community and we should be proud of it. It is used daily, almost year round, by families attending sporting events, summer day camp, preschoolers during the day, group activities, social gatherings and more.

**Describe the impact to your department / business / establishment if ARPA funds are NOT approved.**

Without funding, the playground will revert to community fundraising.  
Until the funding is met, no playground equipment can be purchased or installed.

**Budget Overview (How will the ARPA funding be spent?)  
(If more room is needed, please attach additional spreadsheet)**

Budgeted item / Service	Budgeted Amount	Notes
Playground equip.	\$ 377,900	New Playground equipment
Installation	\$ 121,000	Installation by certified and licensed professionals
	\$	
	\$	
	\$	
	\$	
	\$	
	\$	
	\$	
	\$	
	\$	
<b>TOTAL:</b>	<b>\$ 498,900</b>	



**Potential placement of newly requested playground equipment at the RecPlex.**

\*Picture is not drawn to scale and is for illustrative purposes only.

Public ideas and input are welcome.  
 Call the office or follow our Facebook page for Public Playground Information Meeting dates/times. (860) 537-7297



Add some enchantment to your playground with this beautiful tower. Sculpted vine climber on the front and entry areas for connecting climbers, slides, tube slides and more.

## Features and Benefits:

Model: 029TSA

Limited Lifetime Warranty on uprights, hardware and connections. Visit [gametime.com/warranty](http://gametime.com/warranty) for full warranty information



Designing award-winning playgrounds since 1929.



Certified Installer Network - GameTime trained for GameTime playgrounds.



Complies with ASTM standards before it leaves the factory.



With forest-themed accents, multiple skill climbers, varied slide types and ramped access throughout the system, Kensington is a perfect play destination for children of all abilities. Designed using Me2: 7 Principles of Inclusive Playground Design, this system meets the requirements for National Demonstration Site status.

### Features and Benefits:

- Accessible, inclusive play system for children of all abilities
- Affordable theming option
- Multiple layers of play, maximizes available space
- Wide range of sliding play experiences, including accessible slide transfer

Model: PS19016  
Use Zone: 54' X 72'  
Fall Height: 8'  
Age Group: 5 to 12 Years  
Number of Children: 140-145

Limited Lifetime Warranty on uprights, hardware and connections. Visit [gametime.com/warranty](http://gametime.com/warranty) for full warranty information



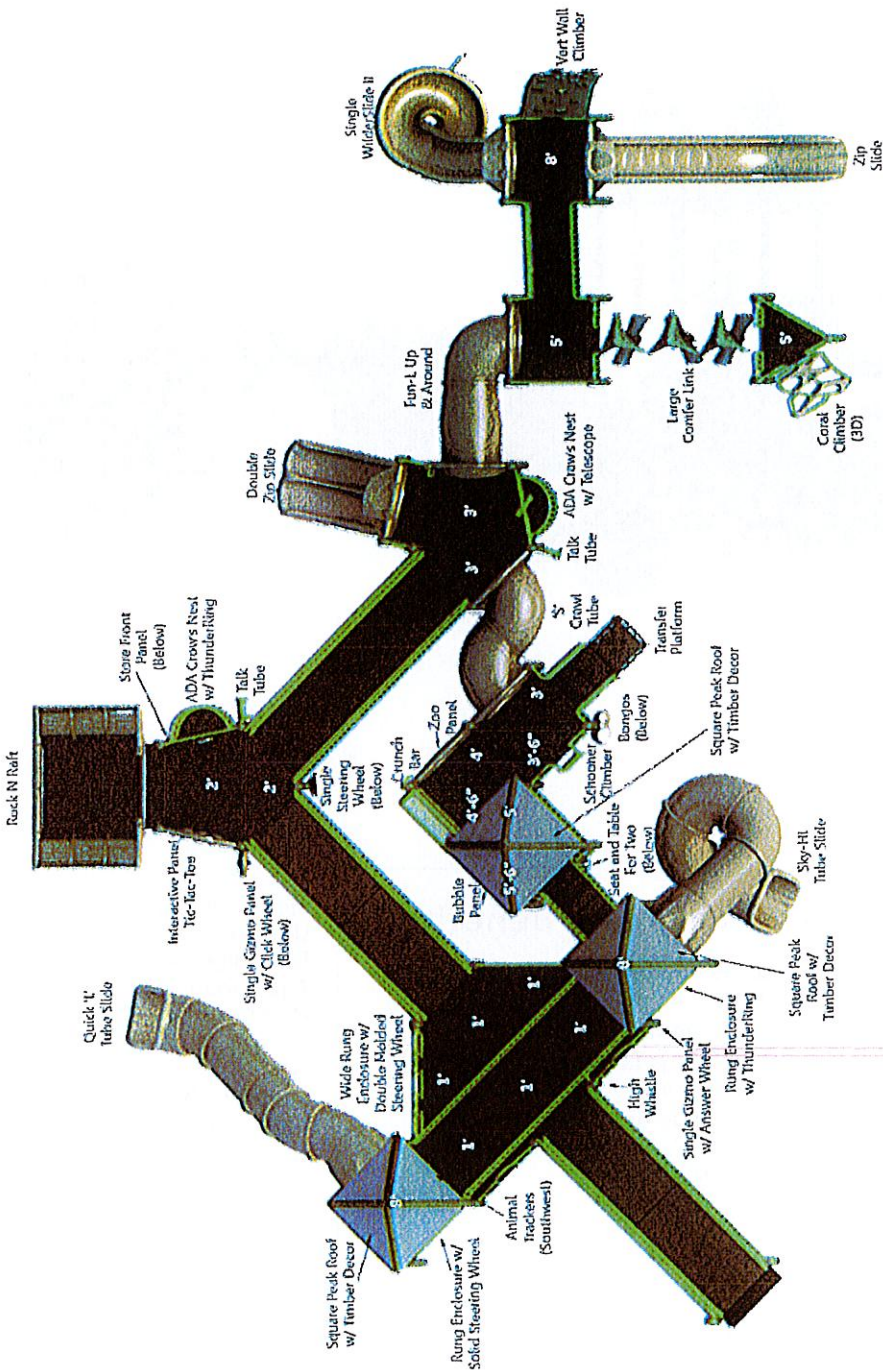
Designing award-winning playgrounds since 1929.

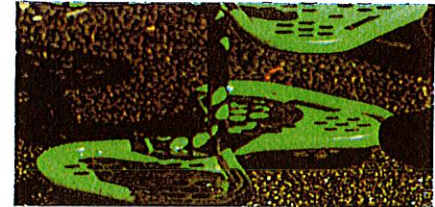


Certified Installer Network - GameTime trained for GameTime playgrounds.



Complies with ASTM standards before it leaves the factory.





A fun, compact play system with lots of play favorites like our Little Foot Slide, crawl tubes, swaying bridge and Wave Climber. Integrated roofs offer shade on sunny days.

[View Vortex in 3D!](#)

**Features and Benefits:**

- Compact design
- Lots of play value packed into a small size
- Constructed of durable, recyclable materials and backed by the industry's leading warranty

Model: PT20011  
 Use Zone: 37' X 38'  
 Fall Height: 4'  
 Age Group: 2 to 5 Years  
 Number of Children: 50-55

Limited Lifetime Warranty on uprights, hardware and connections. Visit [gametime.com/warranty](http://gametime.com/warranty) for full warranty information



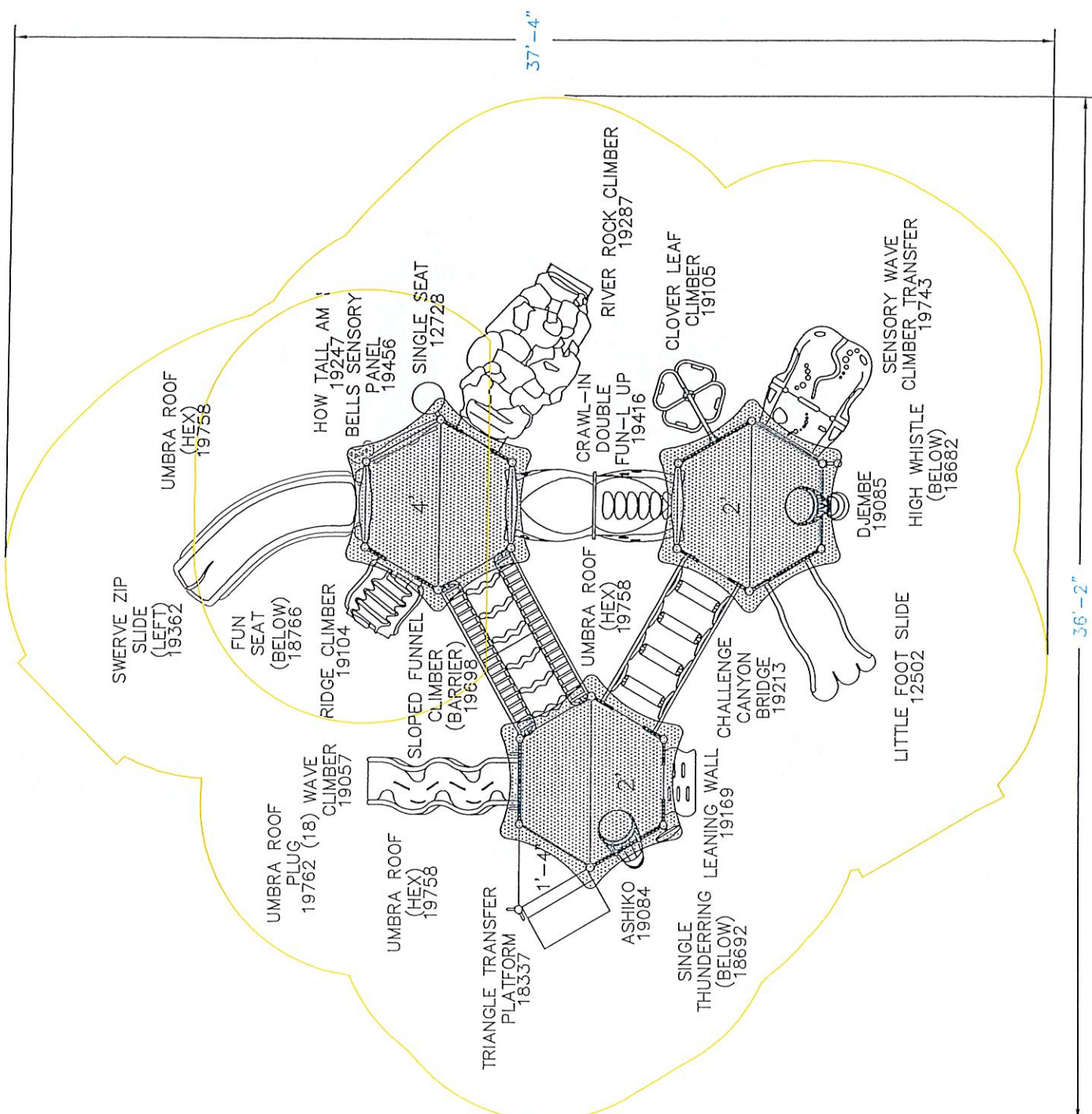
Designing award-winning playgrounds since 1929.



Certified Installer Network - GameTime trained for GameTime playgrounds.



Complies with ASTM standards before it leaves the factory.



SWERVE ZIP  
SLIDE  
(LEFT)  
19362

UMBRA ROOF  
(HEX)  
19758

FUN  
SEAT  
(BELOW)  
18766

HOW TALL AM I  
19247  
BELLS SENSORY  
PANEL  
19456

SINGLE SEAT  
12728

RIVER ROCK CLIMBER  
19287

CLOVER LEAF  
CLIMBER  
19105

SENSORY WAVE  
CLIMBER TRANSFER  
19743

RIDGE CLIMBER  
19104

SLOPED FUNNEL  
CLIMBER  
(BARRIER)  
19698

CRAWL-IN  
DOUBLE  
FUN-L UP  
19416

D-JEMBE  
19085

HIGH WHISTLE  
(BELOW)  
18682

UMBRA ROOF  
PLUG  
19762 (18)  
WAVE  
CLIMBER  
19057

UMBRA ROOF  
(HEX)  
19758

TRIANGLE TRANSFER  
PLATFORM  
18337

ASHIKO  
19084

SINGLE  
THUNDERING LEANING WALL  
(BELOW)  
18692

CHALLENGE  
CANYON  
BRIDGE  
19213

LITTLE FOOT SLIDE  
12502

37'-4"

36'-2"

1'-4"



# Newsletter

Sign up for our newsletter and be the first to know about coupons and special promotions.

Sign Up

America's  
Premier  
Playground

Supplier

[fun@willygoat.com](mailto:fun@willygoat.com) 888.920.4628 [Subscribe](#)

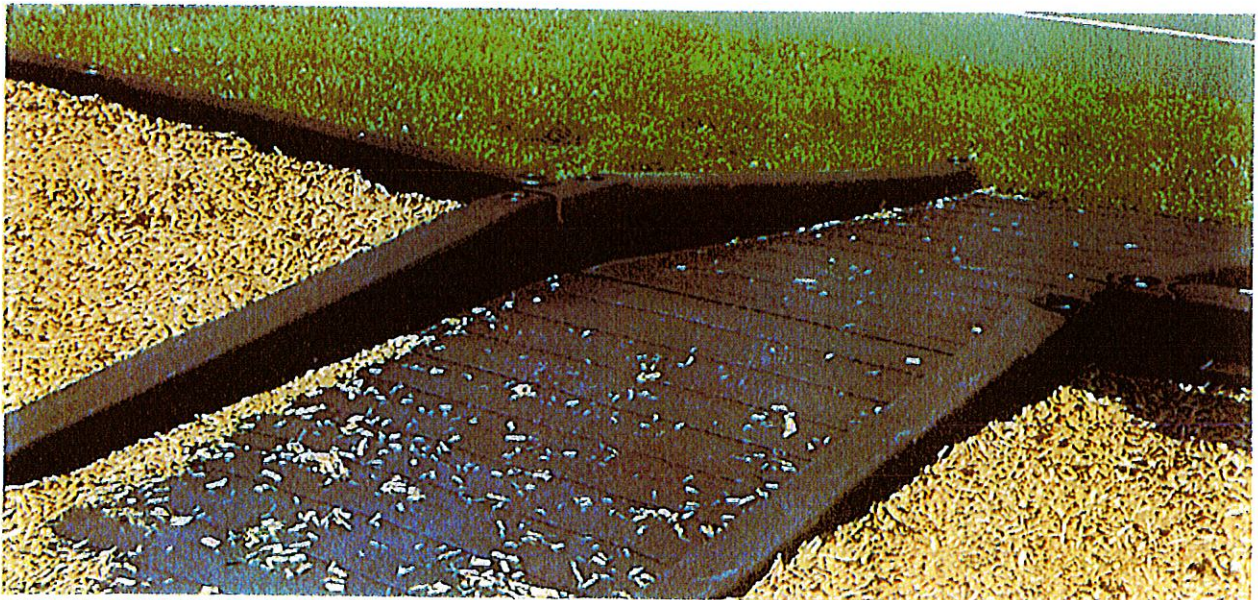


**WillyGoat™**  
TOYS & PLAYGROUNDS

Search  
Close



Quote



## ADA Accessible Full Ramp

EXCLUSIVE OFFERS



# Newsletter

Sign up for our newsletter and be the first to know about coupons and special promotions.

email@example.com

Sign Up

America's  
Premier  
Playground

Supplier

fun@willygoat.com 888.920.4628 [Subscribe](#)



Search  
Close



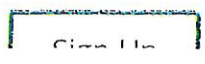
Quote





# Newsletter

Sign up for our newsletter and be the first to know about coupons and special promotions.

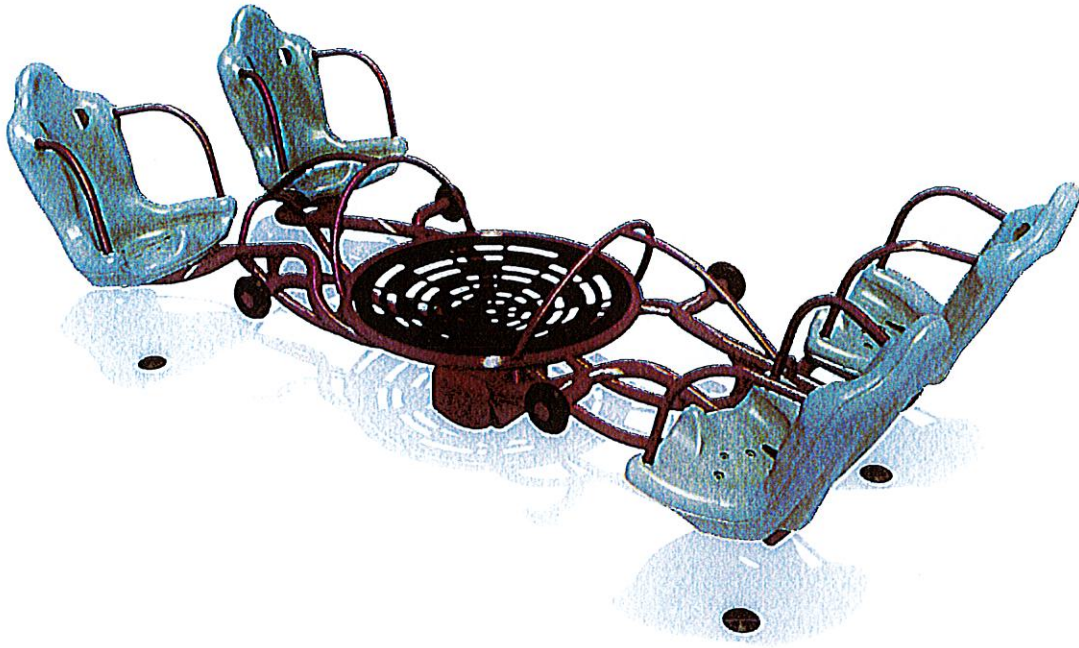


America's  
Premier

Playground Supplier

[fun@willygoat.com](mailto:fun@willygoat.com) 888.920.4628 [Subscribe](#)





With high backs and side rails, each of the four seats on this innovative see-saw are designed to accommodate users of all abilities as they enjoy the rocking motion with their friends. The center saucer is designed for users to transfer easily to and from a mobility device and the durable, heavy-duty springs are made to last!

### Features and Benefits:

- ◆ Inclusive see-saw activity for up to five users
- ◆ High back seats with side rails provide additional support for children of all abilities
- ◆ Center saucer is at transfer height for users with mobility devices

Model: 6245  
Use Zone: 23'-6" X 17'-4"  
Age Group: 5 to 12 Years

Limited Lifetime Warranty on uprights, hardware and connections. Visit [gametime.com/warranty](http://gametime.com/warranty) for full warranty information



Designing award-winning playgrounds since 1929.



Certified Installer Network - GameTime trained for GameTime playgrounds.



Complies with ASTM standards before it leaves the factory.



The SkyRun Zip Track offers a fun and exciting motion play activity that feels like flying through the air. The zero-G seat promotes inclusivity and allows children who need additional support to join in on the fun.

### Features and Benefits:

- Accessible to children of all abilities
- Helps process sensory information
- Allows for imaginary play
- Available in 33' (90856) & 53' (90860) Options as well as Add-a-Track options 90858 (33') & 90862 (53') to allow for design flexibility.

Model: 90860  
Use Zone: 19'-10" X 64'-7"  
Fall Height: 9'  
Age Group: 5 to 12 Years

Limited Lifetime Warranty on uprights, hardware and connections. Visit [gametime.com/warranty](http://gametime.com/warranty) for full warranty information



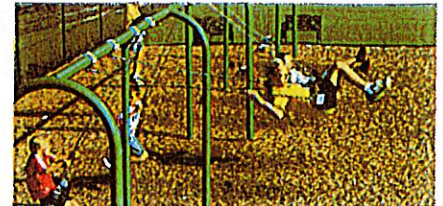
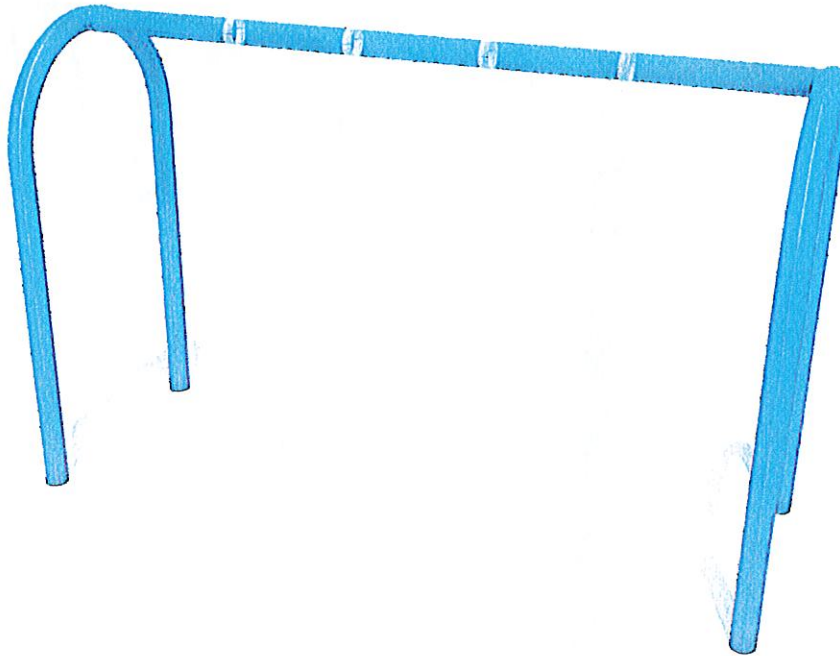
Designing award-winning playgrounds since 1929.



Certified Installer Network - GameTime trained for GameTime playgrounds.



Complies with ASTM standards before it leaves the factory.



PowerScape Swing Frame is a swing frame that can hold up to two swing seats per bay. PowerScape systems are designed for maximum durability, making this the perfect swing set for schools, parks, and other large youth organizations with high traffic. Swing seats are sold separately.

## Features and Benefits:

- PowerScape Line is designed for maximum durability compared to competing play systems
- Promotes social interaction and processing sensory information
- Increases spatial awareness and helps develop gross and fine motor skills
- Enhances core strength

Model: 10847  
Use Zone: 24'-11" X 30'-9"  
Fall Height: 8'  
Age Group: 2 to 5 Years  
Age Group: 5 to 12 Years

Limited Lifetime Warranty on uprights, hardware and connections. Visit [gametime.com/warranty](http://gametime.com/warranty) for full warranty information



Designing award-winning playgrounds since 1929.



Certified Installer Network - GameTime trained for GameTime playgrounds.



Complies with ASTM standards before it leaves the factory.



Expression Swing is a GameTime exclusive and the industry's first playground swing that promotes intergenerational play as adults and children swing together. The patented face-to-face design features a bucket seat for children under five and a comfortable adult swing seat that allows a parent and child (or grandparent and grandchild) to interact with each other and experience...

### Features and Benefits:

- See Eye to Eye - Patent-pending face-to-face design positions adult and child at eye level with one another so they can interact
- Swing in Comfort - Exclusive platform swing seat is ergonomically designed for adults and compliant with current swing safety standards
- Beyond the Swing - Promotes social...

Model: 5128

Limited Lifetime Warranty on uprights, hardware and connections. Visit [gametime.com/warranty](http://gametime.com/warranty) for full warranty information



Designing award-winning playgrounds since 1929.



Certified Installer Network - GameTime trained for GameTime playgrounds.



Complies with ASTM standards before it leaves the factory.



Adding a Zero-G Chair swing to your playground allows children who require additional support to swing alongside their friends. This creates an inclusive environment of play parity where everyone can join in the fun. The Zero-G Chair is available for ages 2-5 and 5-12.

### Features and Benefits:

- Children with physical disabilities can experience movement apart from their mobility device
- High back, wing support, wide base and molded harness help the user maintain a neutral body position and minimize fatigue
- Fully engages the senses and encourages interaction among caregivers and peers

Model: 8556  
Age Group: 5 to 12 Years

Limited Lifetime Warranty on uprights, hardware and connections. Visit [gametime.com/warranty](http://gametime.com/warranty) for full warranty information



Designing award-winning playgrounds since 1929.



Certified Installer Network - GameTime trained for GameTime playgrounds.



Complies with ASTM standards before it leaves the factory.