

CHATHAM HEALTH DISTRICT COVID-19 STATUS REPORT

Updated 06Jan2022

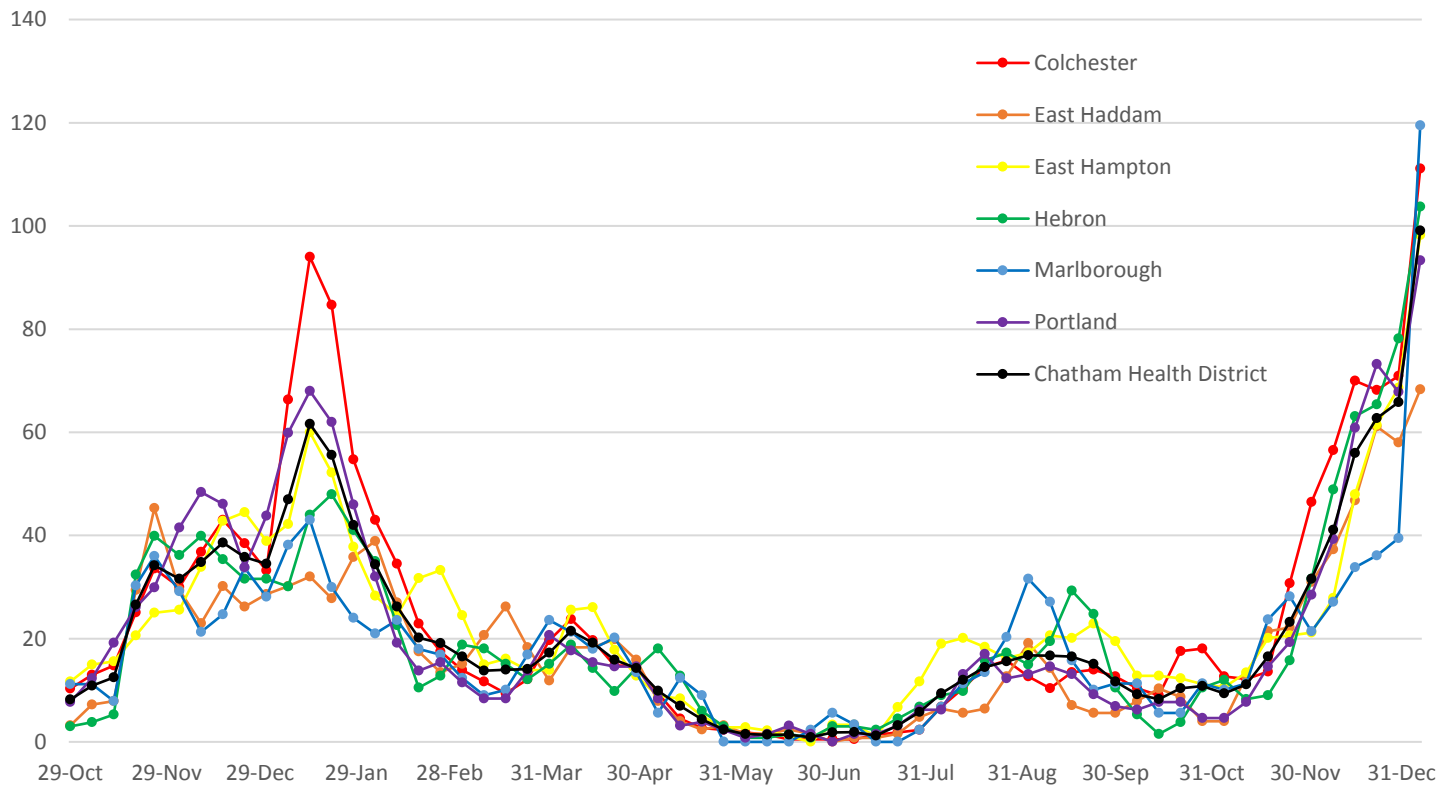
COVID-19 CASES (DPH reporting period: (12/19-01/01))

Dashboard

Town	Alert Status	Average Daily Case Rate #/100,000 population	Number of Cases	Change in Number of Cases
Colchester	Red	111.1	246	89
East Haddam	Red	68.3	86	13
East Hampton	Red	98.2	176	53
Hebron	Red	103.7	138	34
Marlborough	Red	119.5	106	71
Portland	Red	93.3	121	33
Chatham Health District	NA	99.1	873	293

Increased from previous week
Decreased from previous week
Unchanged from previous week

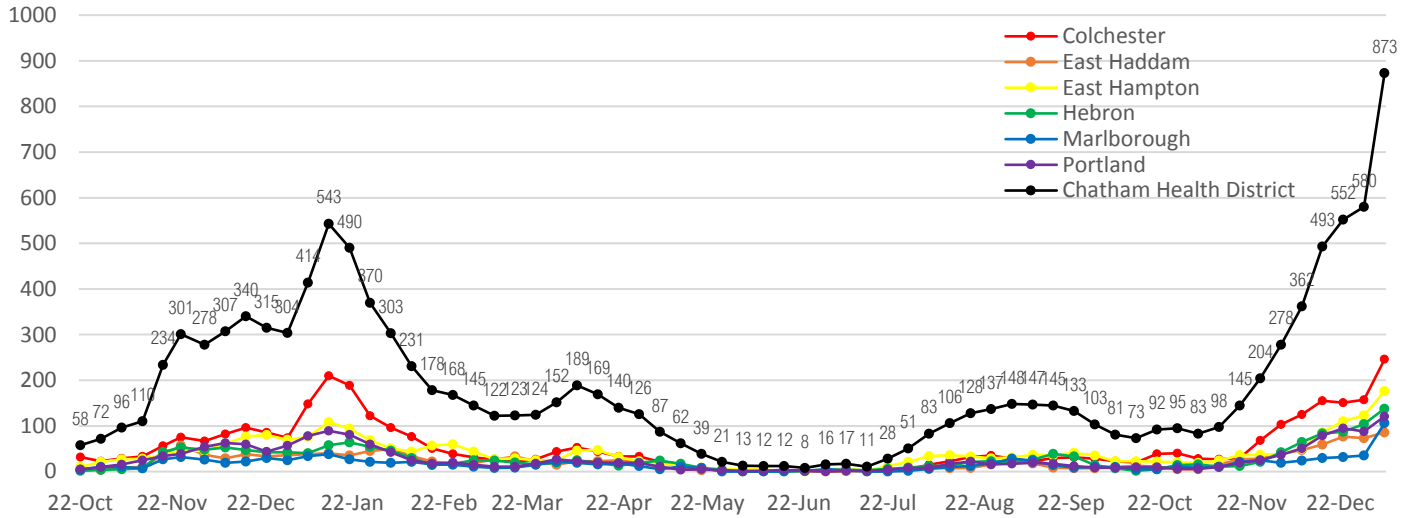
Average Daily Case Rate by Town (# of cases /100,000)



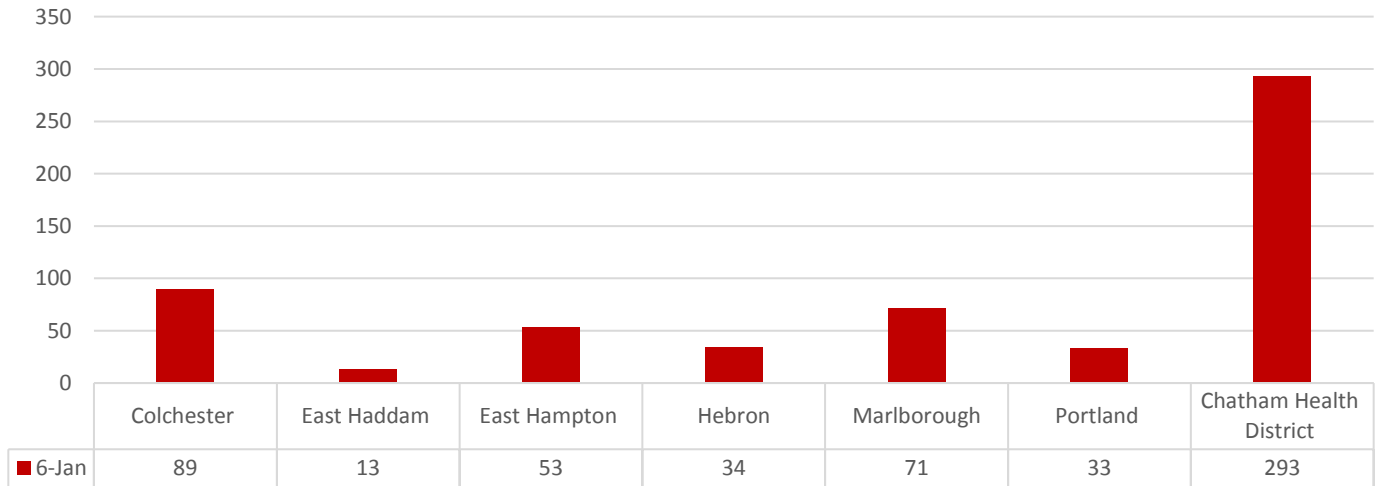
CHATHAM HEALTH DISTRICT COVID-19 STATUS REPORT

Updated 06Jan2022

Number of Cases Reported by Town



Change in Number of Cases Reported by Town



Source:

<https://data.ct.gov/Health-and-Human-Services/COVID-19-DPH-Reports-Library/bqve-e8um>

CHATHAM HEALTH DISTRICT COVID-19 STATUS REPORT

Updated 06Jan2022

COVID-19 VACCINATION

Overall COVID-19 Vaccination Rates by Town

Vaccination Coverage as Reported by CT DPH on 05Jan2022

Town	% Total Population That Has Received First Dose	% Total Population This Is Fully Vaccinated
Colchester	79.06%	72.11%
East Haddam	74.28%	66.27%
East Hampton	76.77%	70.13%
Hebron	78.70%	71.93%
Marlborough	80.52%	73.58%
Portland	82.14%	75.53%
Chatham Health District	78.5%	71.5%
Connecticut	79.6%	70.1%

Sources:

<https://data.ct.gov/stories/s/CoVP-COVID-Vaccine-Distribution-Data/bhcd-4mnv/>

<https://data.ct.gov/Health-and-Human-Services/COVID-19-Vaccinations-by-Town/x7by-h8k4>

Age-Specific Vaccination Rates by Town

Town	% Initiated Vaccination – 1/5/22					
	5 to 11	12 to 17	18 to 24	25 to 44	45 to 64	65+
Colchester	35.01	63.11	78.26	82.0	83.94	100
East Haddam	22.78	57.29	87.25	72.49	73.72	100
East Hampton	36.93	79.62	80.88	74.28	78.23	100
Hebron	30.57	54.35	92.6	80.07	81.22	100
Marlborough	35.52	78.05	100	76.86	79.48	100
Portland	48.36	70.91	82.26	84.40	83.53	100

Town	% Fully Vaccinated – 1/5/22					
	5 to 11	12 to 17	18 to 24	25 to 44	45 to 64	65+
Colchester	22.17	60.11	71.01	74.8	78.5	100
East Haddam	10.41	53.29	74.65	66.00	66.77	100
East Hampton	22.88	75.32	71.61	69.25	73.17	100
Hebron	20.72	51.29	82.24	74.05	76.35	100
Marlborough	25.28	73.36	95.88	70.89	74.53	100
Portland	37.98	66.76	72.82	78.19	77.39	100

Source: <https://data.ct.gov/Health-and-Human-Services/COVID-19-Vaccinations-by-Town-and-Age-Group/gngw-ukpw>