

# CHATHAM HEALTH DISTRICT COVID-19 STATUS REPORT

Updated 30Dec2021

**COVID-19 CASES** (DPH reporting period: (12/12-12/25))

## Dashboard

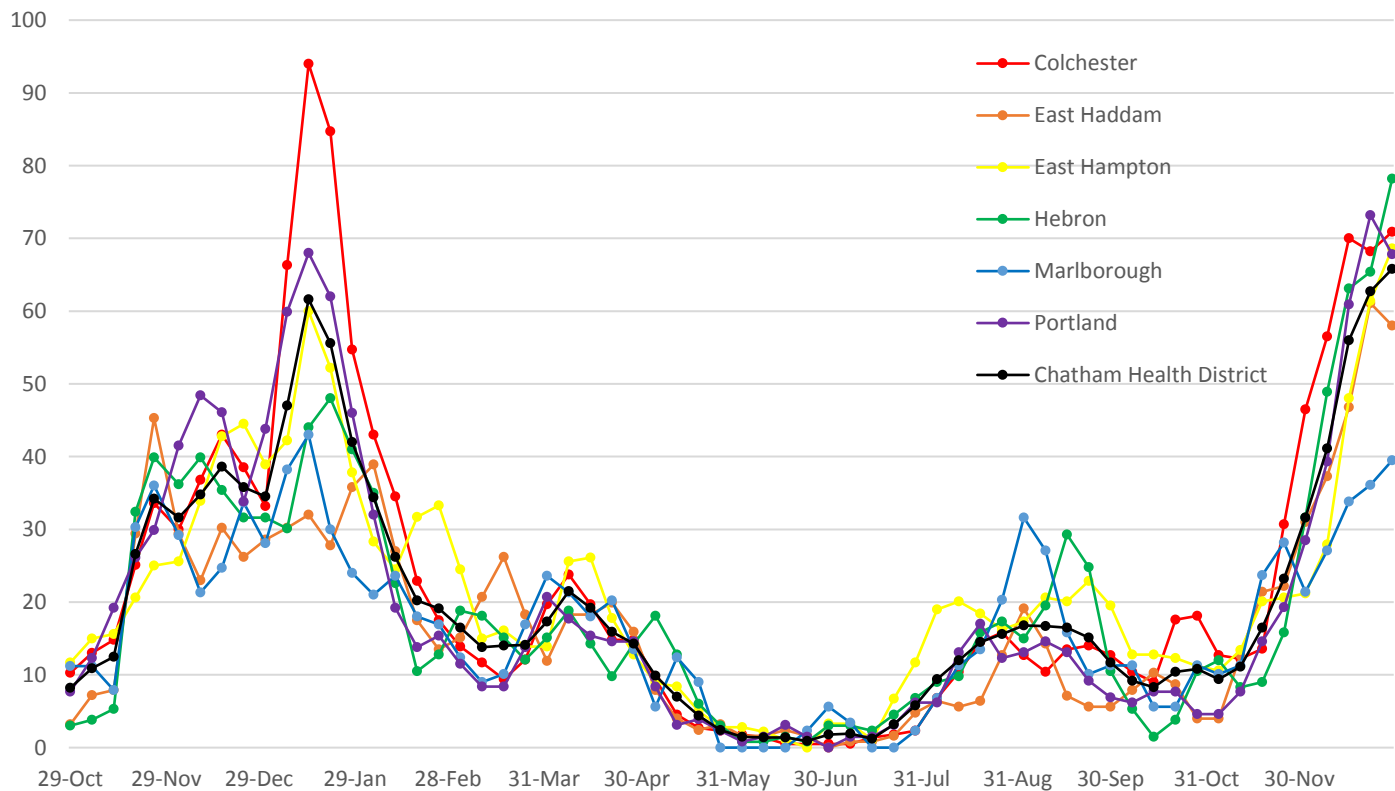
Town	Alert Status	Average Daily Case Rate #/100,000 population	Number of Cases	Change in Number of Cases
Colchester	Red	70.9	157	6
East Haddam	Red	58.0	73	-4
East Hampton	Red	68.6	123	13
Hebron	Red	78.2	104	17
Marlborough	Red	39.5	35	3
Portland	Red	67.8	88	-7
Chatham Health District	NA	65.8	580	28

Increased from previous week

Decreased from previous week

Unchanged from previous week

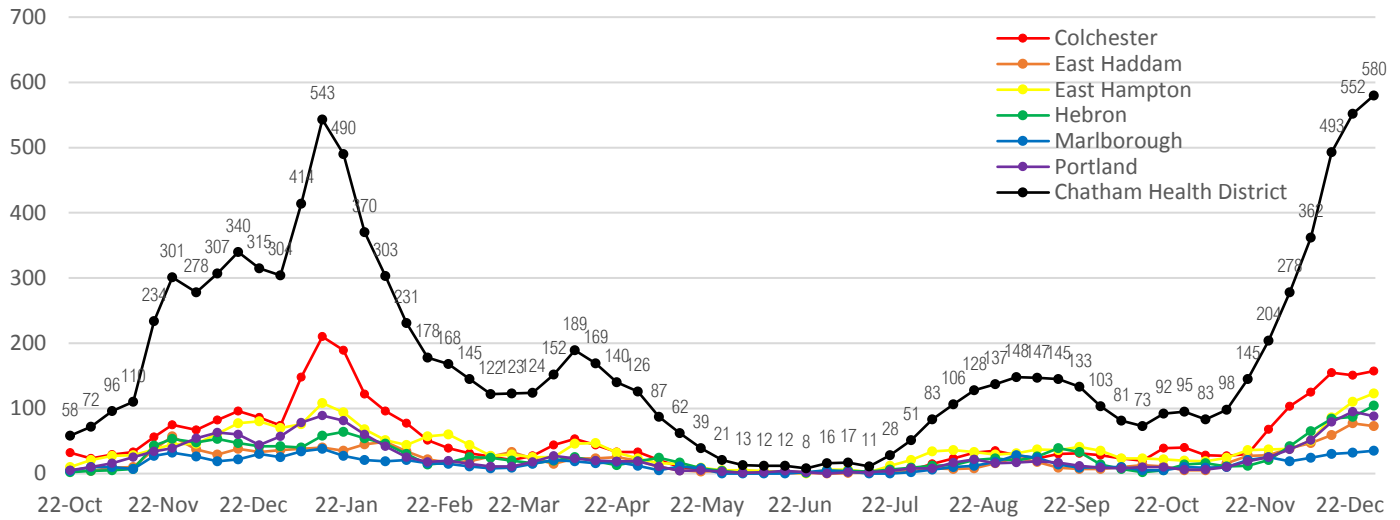
## Average Daily Case Rate by Town (# of cases /100,000)



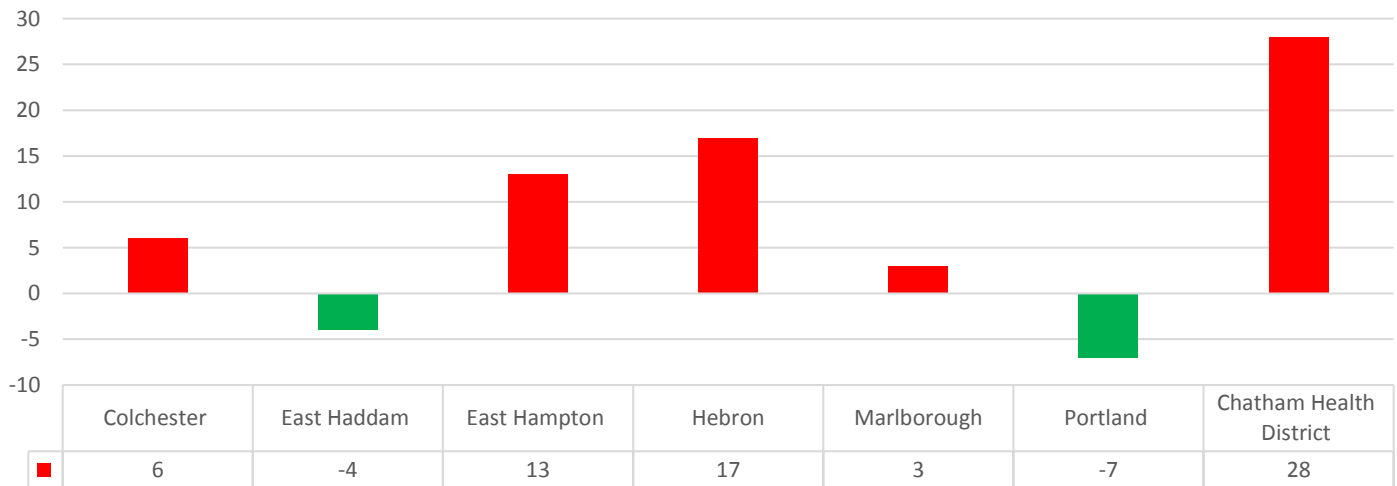
# CHATHAM HEALTH DISTRICT COVID-19 STATUS REPORT

Updated 30Dec2021

## Number of Cases Reported by Town



## Change in Number of Cases Reported by Town



Source:

<https://data.ct.gov/Health-and-Human-Services/COVID-19-DPH-Reports-Library/bqve-e8um>

# CHATHAM HEALTH DISTRICT COVID-19 STATUS REPORT

Updated 30Dec2021

## COVID-19 VACCINATION

### Overall COVID-19 Vaccination Rates by Town

Vaccination Coverage as Reported by CT DPH on 29Dec2021

Town	% Total Population That Has <b>Received First Dose</b>	% Total Population This Is <b>Fully Vaccinated</b>
Colchester	78.32%	71.66%
East Haddam	73.82%	65.98%
East Hampton	76.17%	69.72%
Hebron	78.04%	70.97%
Marlborough	80.03%	73.35%
Portland	81.42%	74.34%
Chatham Health District	77.8%	70.9%
Connecticut	78.8%	69.67%

Sources:

<https://data.ct.gov/stories/s/CoVP-COVID-Vaccine-Distribution-Data/bhcd-4mnv/>

<https://data.ct.gov/Health-and-Human-Services/COVID-19-Vaccinations-by-Town/x7by-h8k4>

### Age-Specific Vaccination Rates by Town

Town	% Initiated Vaccination - 12/29/2021					
	5 to 11	12 to 17	18 to 24	25 to 44	45 to 64	65+
Colchester	31.84	62.84	77.21	81.11	83.66	100
East Haddam	19.46	56.57	86.94	72.34	73.48	100
East Hampton	35.35	78.36	80.32	74.28	77.71	100
Hebron	28.67	54.25	90.75	79.25	80.89	100
Marlborough	32.32	78.42	100	76.58	79.48	100
Portland	45.77	70.38	81.40	83.21	83.53	100

Town	% Fully Vaccinated - 12/29/2021					
	5 to 11	12 to 17	18 to 24	25 to 44	45 to 64	65+
Colchester	19.13	59.91	70.73	74.56	78.31	100
East Haddam	8.75	53.29	74.49	65.90	66.56	100
East Hampton	19.26	75.21	71.83	69.02	73.08	100
Hebron	14.00	50.72	81.50	73.73	76.05	100
Marlborough	22.88	73.36	95.64	70.75	74.81	100
Portland	27.60	66.49	72.39	77.33	77.39	100

Source: <https://data.ct.gov/Health-and-Human-Services/COVID-19-Vaccinations-by-Town-and-Age-Group/gngw-ukpw>