

# CHATHAM HEALTH DISTRICT COVID-19 STATUS REPORT

Updated 16Dec2021

**COVID-19 CASES** (DPH reporting period: (11/28-12/11))

## Dashboard

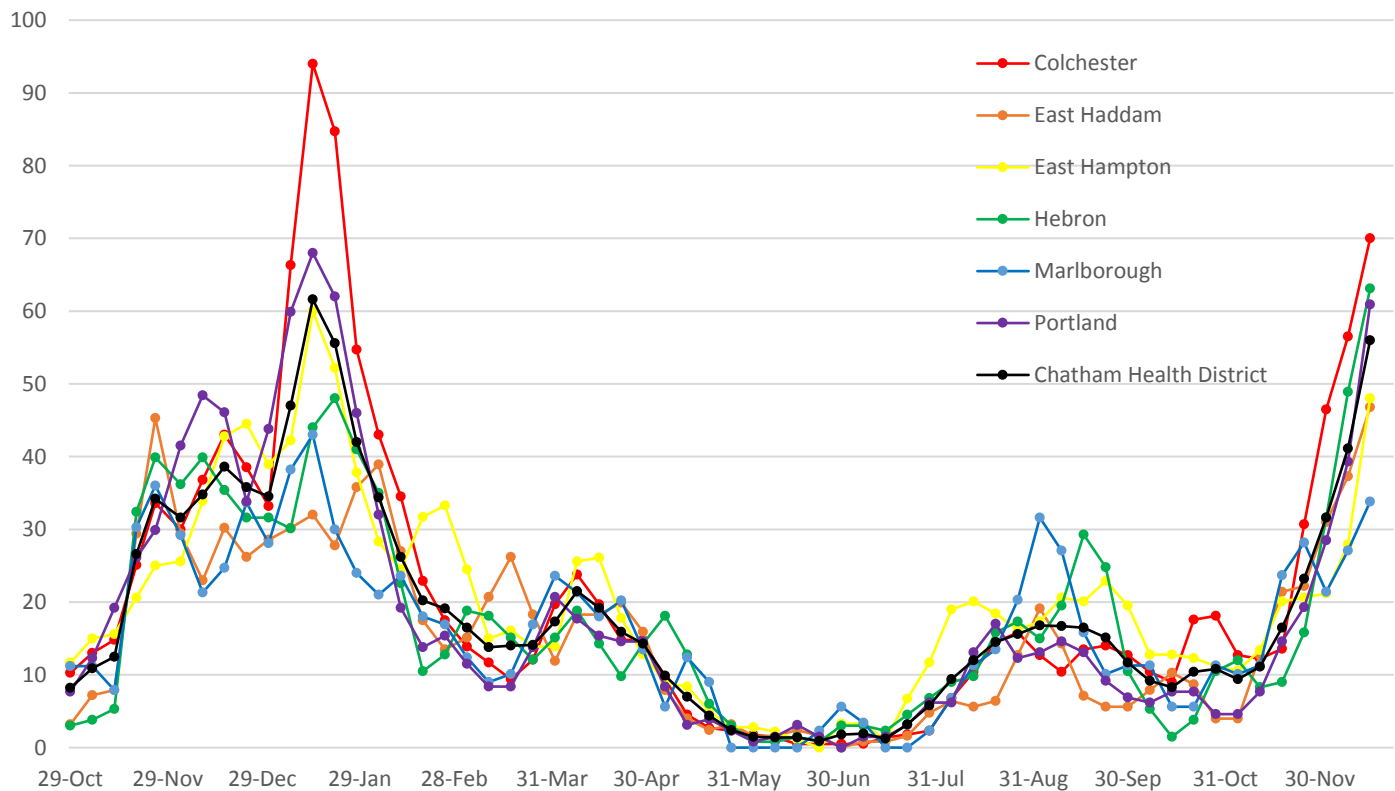
Town	Alert Status	Average Daily Case Rate #/100,000 population	Number of Cases	Change in Number of Cases
Colchester	Red	70.0	155	+30
East Haddam	Red	46.8	59	+12
East Hampton	Red	48.0	86	+36
Hebron	Red	63.1	84	+19
Marlborough	Red	33.8	30	+6
Portland	Red	60.9	79	+28
Chatham Health District	NA	56.0	493	+131

Increased from previous week

Decreased from previous week

Unchanged from previous week

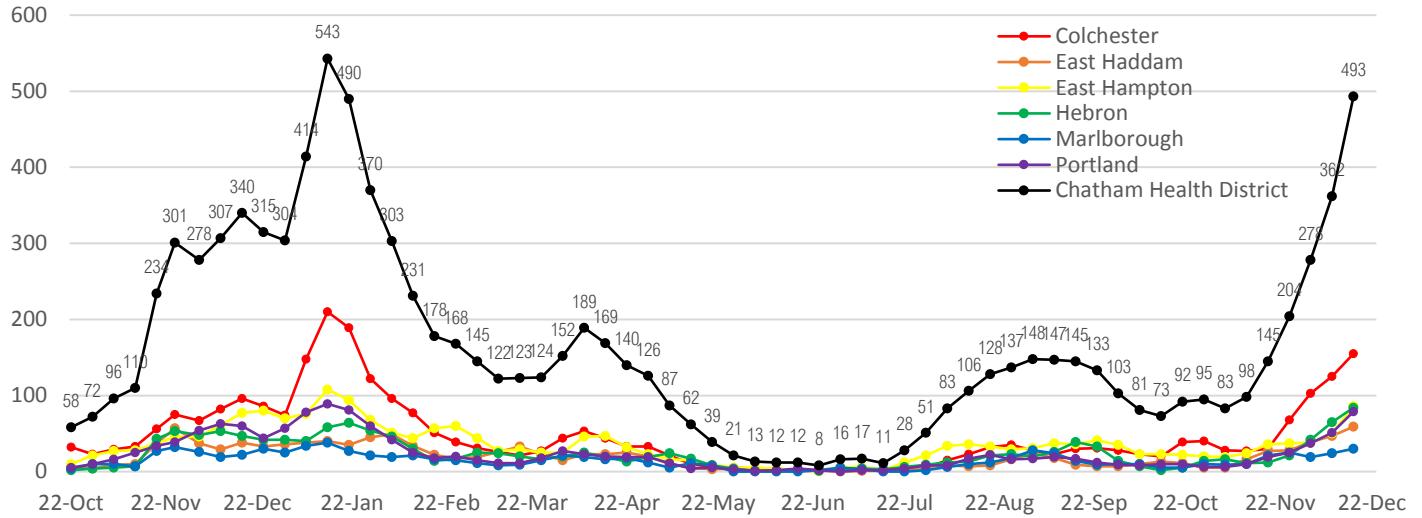
## Average Daily Case Rate by Town (# of cases /100,000)



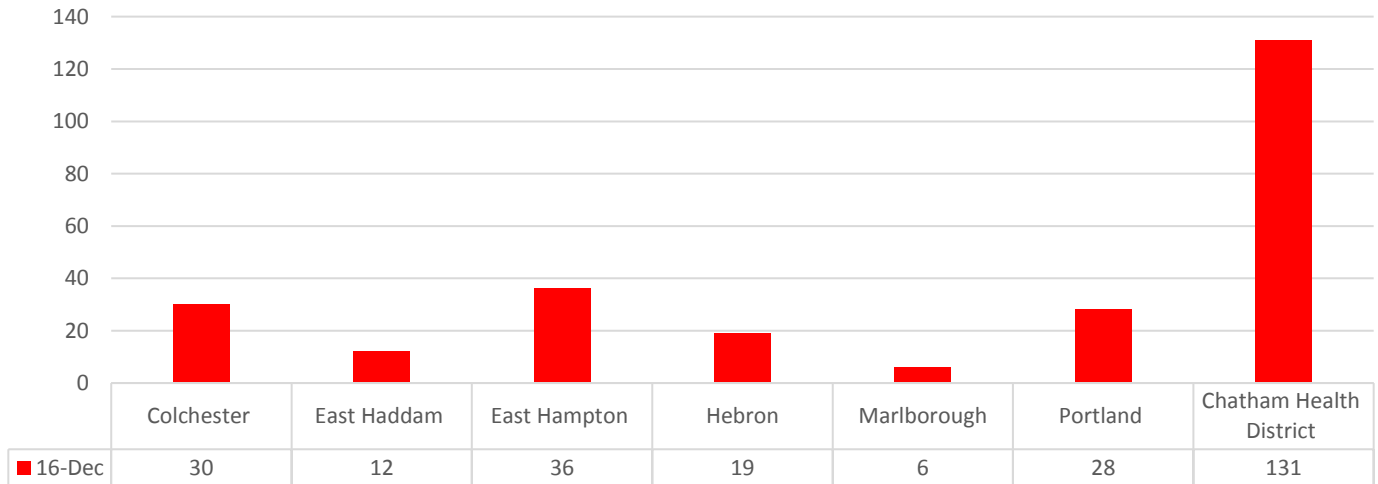
# CHATHAM HEALTH DISTRICT COVID-19 STATUS REPORT

Updated 16Dec2021

## Number of Cases Reported by Town



## Change in Number of Cases Reported by Town



Source:

<https://data.ct.gov/Health-and-Human-Services/COVID-19-DPH-Reports-Library/bqve-e8um>

# CHATHAM HEALTH DISTRICT COVID-19 STATUS REPORT

Updated 16Dec2021

## COVID-19 VACCINATION

### Overall COVID-19 Vaccination Rates by Town

Vaccination Coverage as Reported by CT DPH on 15Dec2021

Town	% Total Population That Has <b>Received First Dose</b>	% Total Population This Is <b>Fully Vaccinated</b>
Colchester	76.77%	70.96%
East Haddam	72.37%	65.06%
East Hampton	75.18%	69.32%
Hebron	76.99%	70.50%
Marlborough	78.12%	72.06%
Portland	80.68%	73.97%
Chatham Health District	76.6%	70.3%
Connecticut	77.34%	69.10%

Sources:

<https://data.ct.gov/stories/s/CoVP-COVID-Vaccine-Distribution-Data/bhcd-4mnv/>

<https://data.ct.gov/Health-and-Human-Services/COVID-19-Vaccinations-by-Town/x7by-h8k4>

### Age-Specific Vaccination Rates by Town

Town	% Initiated Vaccination - 12/15/2021					
	5 to 11	12 to 17	18 to 24	25 to 44	45 to 64	65+
Colchester	23.62	61.77	75.12	80.25	82.76	100
East Haddam	12.07	56	84.14	71.42	73.03	100
East Hampton	32.56	76.58	77.94	73.86	76.96	100
Hebron	24.64	53.01	88.41	78.33	80.5	100
Marlborough	27.52	75.42	100	75.04	78.5	100
Portland	42.35	68.63	80.26	83.07	82.83	100

Town	% Fully Vaccinated - 12/15/2021					
	5 to 11	12 to 17	18 to 24	25 to 44	45 to 64	65+
Colchester	14.92	59.17	69.97	74.48	77.78	100
East Haddam	7.24	52.29	72.94	65.29	66.1	100
East Hampton	17.4	73.74	71.38	69.09	72.95	100
Hebron	11.42	49.86	80.27	73.56	76.08	100
Marlborough	16.8	72.05	93.46	69.62	74.35	100
Portland	22.54	66.22	71.96	77.28	77.52	100

Source: <https://data.ct.gov/Health-and-Human-Services/COVID-19-Vaccinations-by-Town-and-Age-Group/gngw-ukpw>